

Alaska Department of Fish and Game

Habitat Section
Southeast Region



191-20-13800-2016-3151-4041

ADDITION

Water body name:

Quad: Icy Bay D2, D3

Upper Reach Latitude: 59.976076 **Longitude:** -141.655746

Lower Reach Latitude: 59.973449 **Longitude:** -141.654315

Findings: We surveyed this cataloged stream using baited minnow traps and GPS and captured juvenile coho salmon. This stream is in a forested buffer and seeped out of the ground near waypoint 750; lots of skunk cabbage in and around stream (Table 1; Figures 1, 2).

Recommendations: Extend upper extent of Stream No. 191-20-13800-2016-3151-4041 in the anadromous waters catalog (Figure 3).

Nomination: Pending

Survey date: 7/24/2024

Species & Lifestage: CO

Survey crew: NJ, CD, DK

Table 1.–191-20-13800-2016-3151-4041 survey data.

Waypoint	Latitude	Longitude	Notes	Stream Width ft	Stream Substrate	Habitat Features	Gradient %	Sample Effort	Sample Results
750	59.976056	-141.655747	Small channel filled in skunk cabbage with minimal flow. Setting minnow trapped overnight.	6-8	Fine Organic			MT	2 CO



Figure 1.–Juvenile coho salmon caught at waypoint 750.



Figure 2.–Stream channel at waypoint 750.

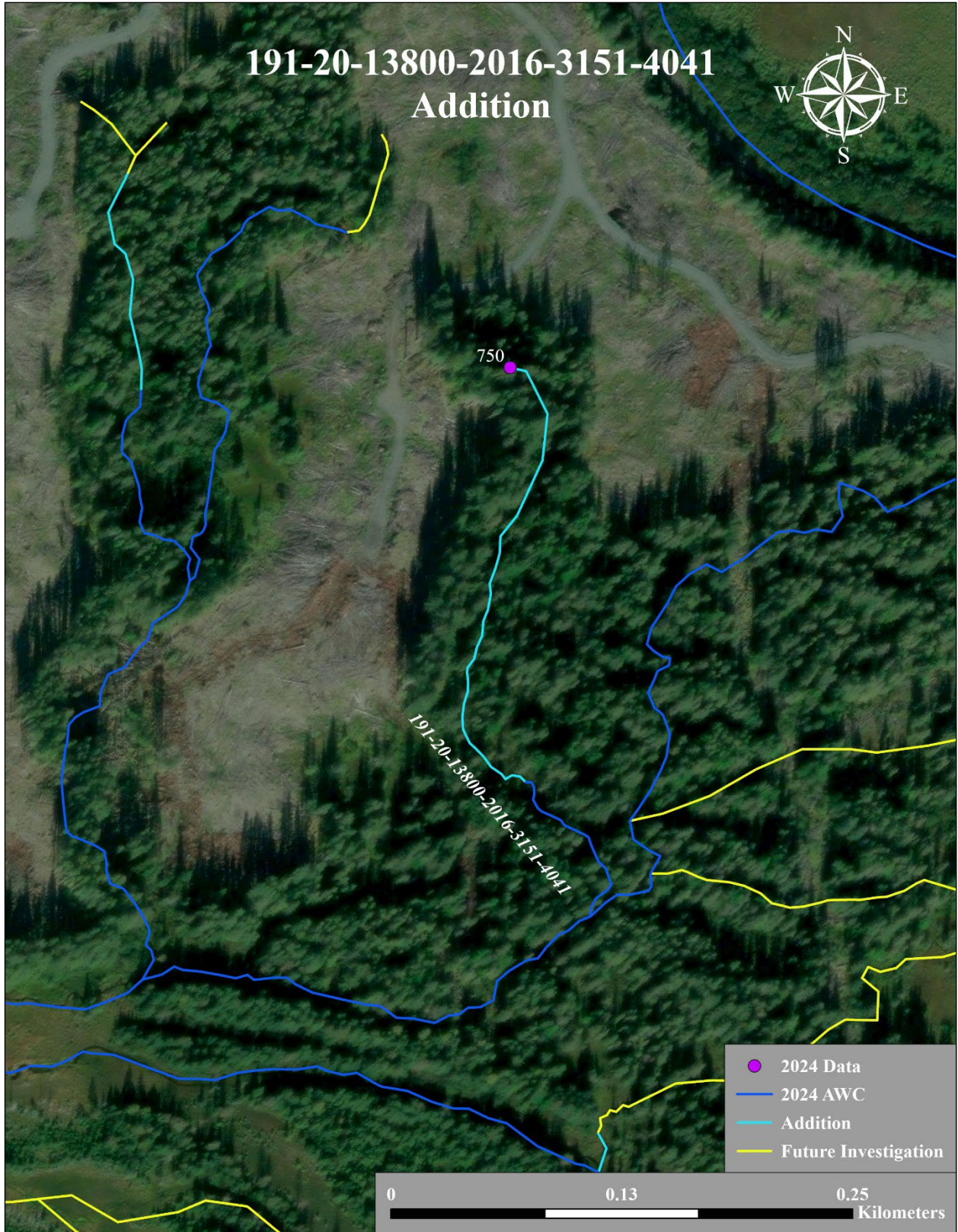


Figure 3.—Stream No. 191-20-13800-2016-3151-4041 addition map.